

How to Train your Dragon

'Symphonic Portrait'

John Powell 
arr. Ton van Grevenbroek

Moderato maestoso 8 poco più vivo 18 26 Agitato $\text{♩} = 120$

7 10 8 2



28 S.D.



31



35



39

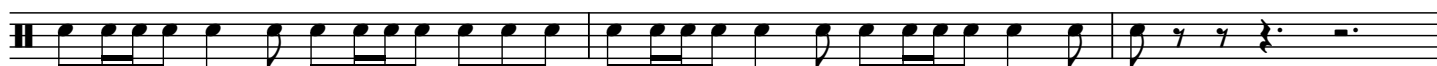
38



41



44



Percussion 2

How to Train your Dragon

47



50

S.D.



54

53



56



61



64



68



73

72



77

76



80



83



Percussion 2

How to Train your Dragon

87 **Allegro** ♩ = 126 **9**

96 **Scherzando** ♩ = 120 **10**

106

109 **112 Misterioso**

116 **120**

126

133 **Moderato misterioso** ♩ = 120 **140** Triangle

144 **153 Larghetto** ♩ = 60

157 **Poco più mosso** ♩ = 88 **rall.** **11**

170 **Poco agitato** ♩ = 96 **5**

177 **180**

184 **2** poco accel **4** rall. **Meno mosso** **3**

188

Percussion 2

How to Train your Dragon

196 Allegro vivo ♩ = 116



Percussion 2

How to Train your Dragon

Allegretto espressivo ♩ = 104

254 **9** Windchimes **3** **3** **8**

mf *mf* *mf*

283 **11** 295 **6** 303 **Marcia festivo** ♩ = 120
S.D.

mf *p* *f*

305

311 312

f

316

320

325 329 **L'istesso tempo** ♩ = 120

p *f*

330

334 **11**

Percussion 2

How to Train your Dragon

348



352



356



360



364

poco rall.

368 Tempo primo ♩ = 112



369

rall.

